

999.00 EUR

incl. 19% VAT, plus [shipping](#)

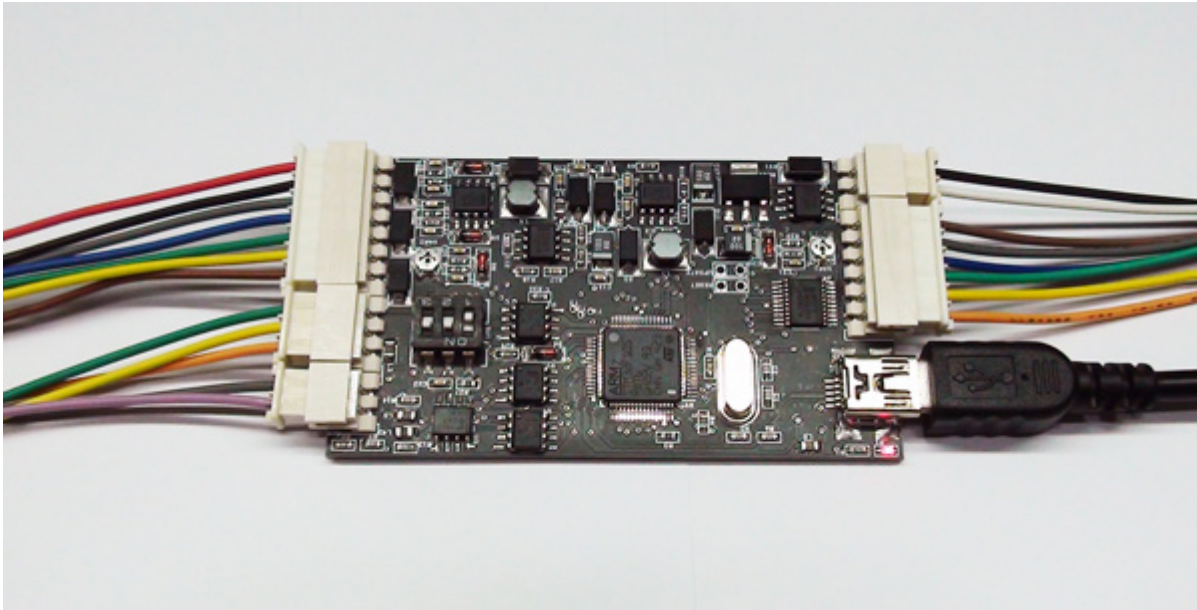
- Centrafuse compatible !

CPJexc(CarPc Joycon Exc) converts CAN, IBUS, resistive, digital steering wheel controls into USB keyboard and HID remote controller. You can control MediaPlayer, Winamp or front-end(ex. CentraFuse) with your steering wheel controls.

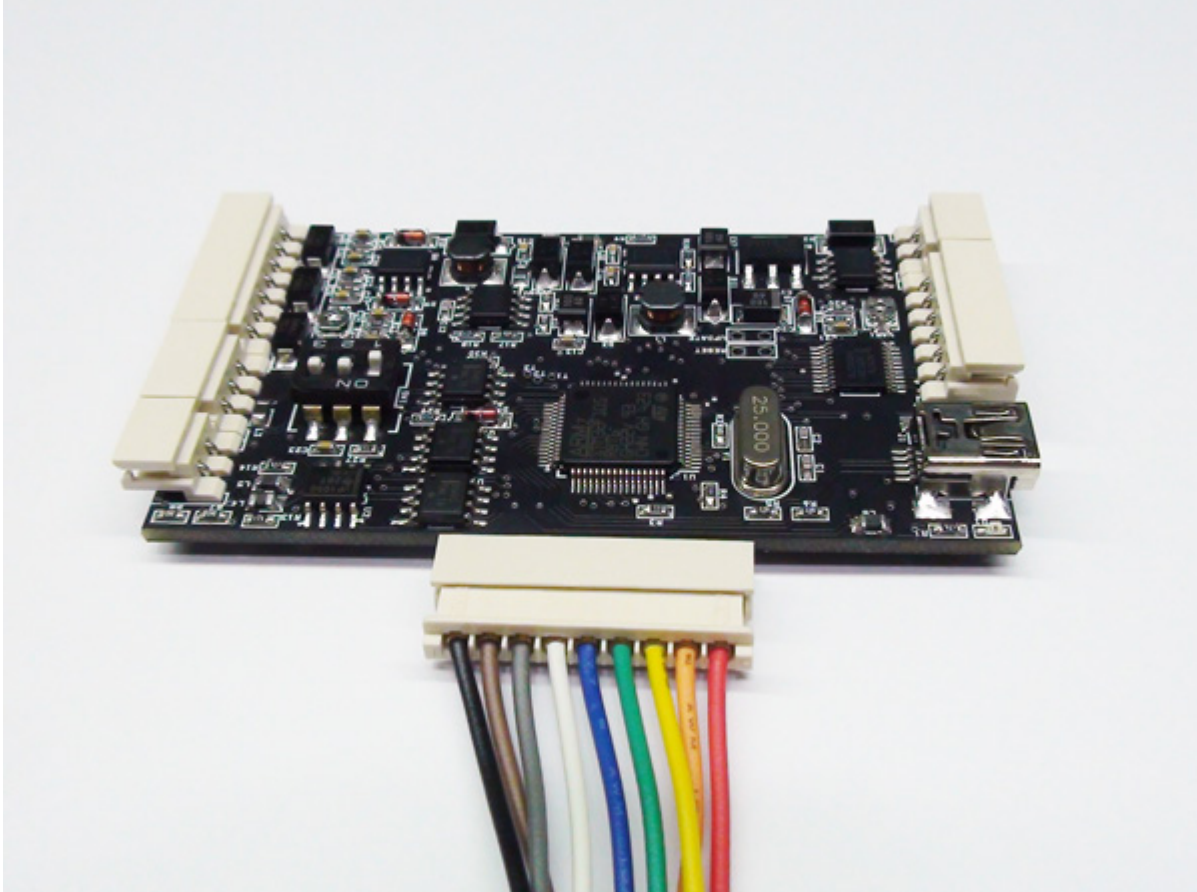
#### Hardware feature

- Converts CAN, IBUS, resistive and digital steering wheel controls into USB HID keyboard and HID remote controller
- Resistance range adjustable
- Supported digital steering wheel controls :  
BMW IBUS, AUDI '99-'04 (LIN), VW '99-'04 (LIN), Renault Clio, Hyundai(digital, Sonata2/3, Marcia, Santamo), Renault SM (digital), Volvo XC70 '03
- Works same as standard USB HID keyboard and HID remote controller by hardware
- 24V tolerant 4 channel resistive(voltage) input
- Supports 28 physical buttons, 52 programmable logical buttons
- Long and Short button for one physical button, up to 5 simultaneous key strokes by one button.
- Supports Cyclic Button
- 6 programmable LED port
- Remote wake-up(resume PC from sleep with steering wheel controls)
- Channel Master/Slave selectable
- Supports J2P BUS peripherals(BSGc, BSGr, CPJ MIX)
- Phone/Mute signal output
- Supports BSGd(Button Signal Generator digital), BSGd emulates BMW IBUS, AUDI '99-'04(LIN), VW '99-'04(LIN)
- Remote signal output for CPJ MIX
- SMPS power supplier circuit(Ultra low heat emission)
- Temperature range : -40 ~ +85°C

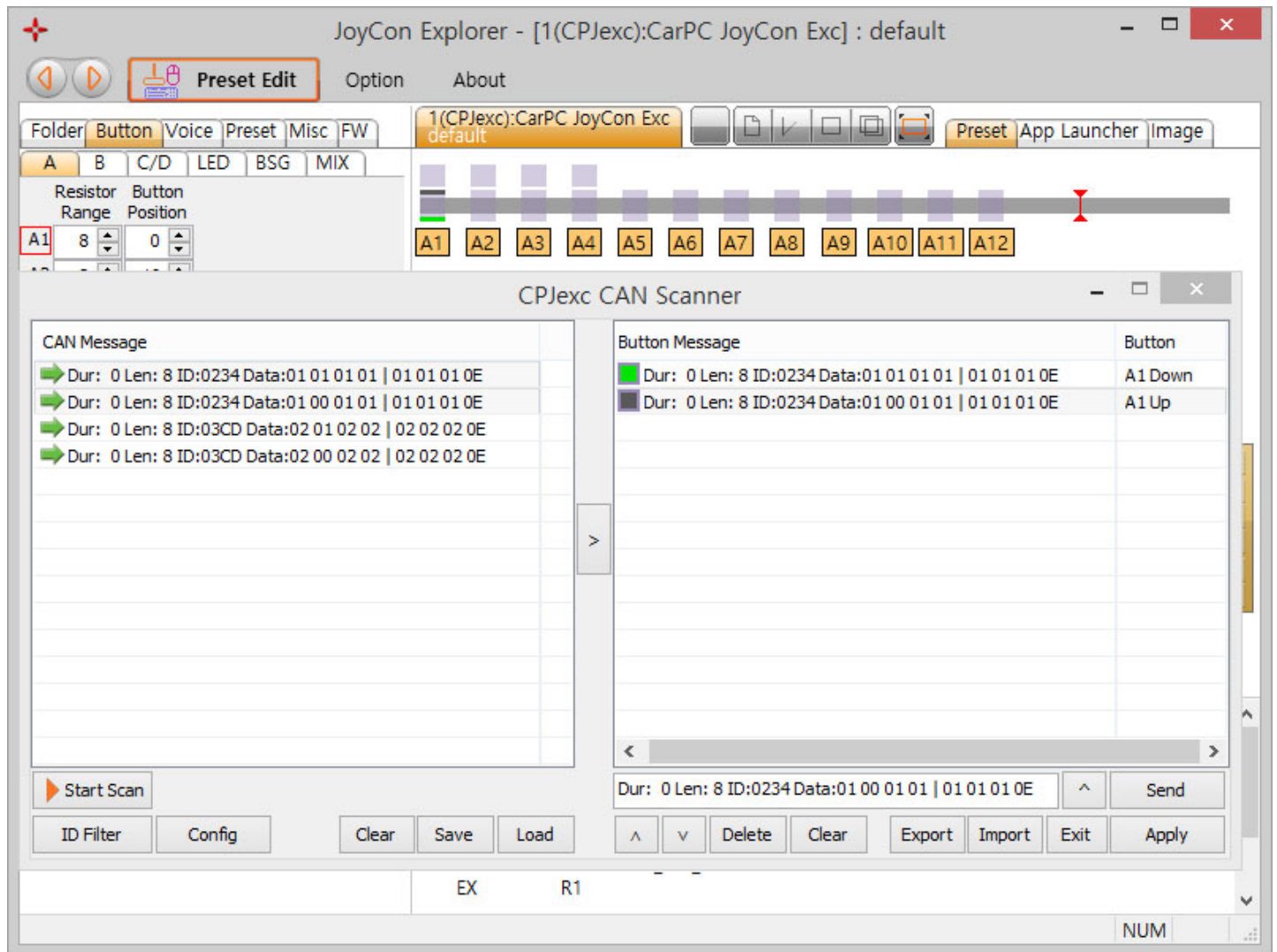




Parallel Port can be used for Renault Clio, Peugeot 206 307 406, Peugeot 306, Ford Mondeo MK2 '96-'00 steering wheel controls.



You can SCAN all the CAN message transactions at the radio connector to use it as buttons.



JoyCon Explorer - [1(CPJexc):CarPC JoyCon Exc] : default

Preset Edit Option About

Folder Button Voice Preset Misc FW 1(CPJexc):CarPC JoyCon Exc default Preset App Launcher Image

A B C/D LED BSG MIX Resistor Button Range Position

A1 8 0

A1 A2 A3 A4 A5 A6 A7 A8 A9 A10 A11 A12

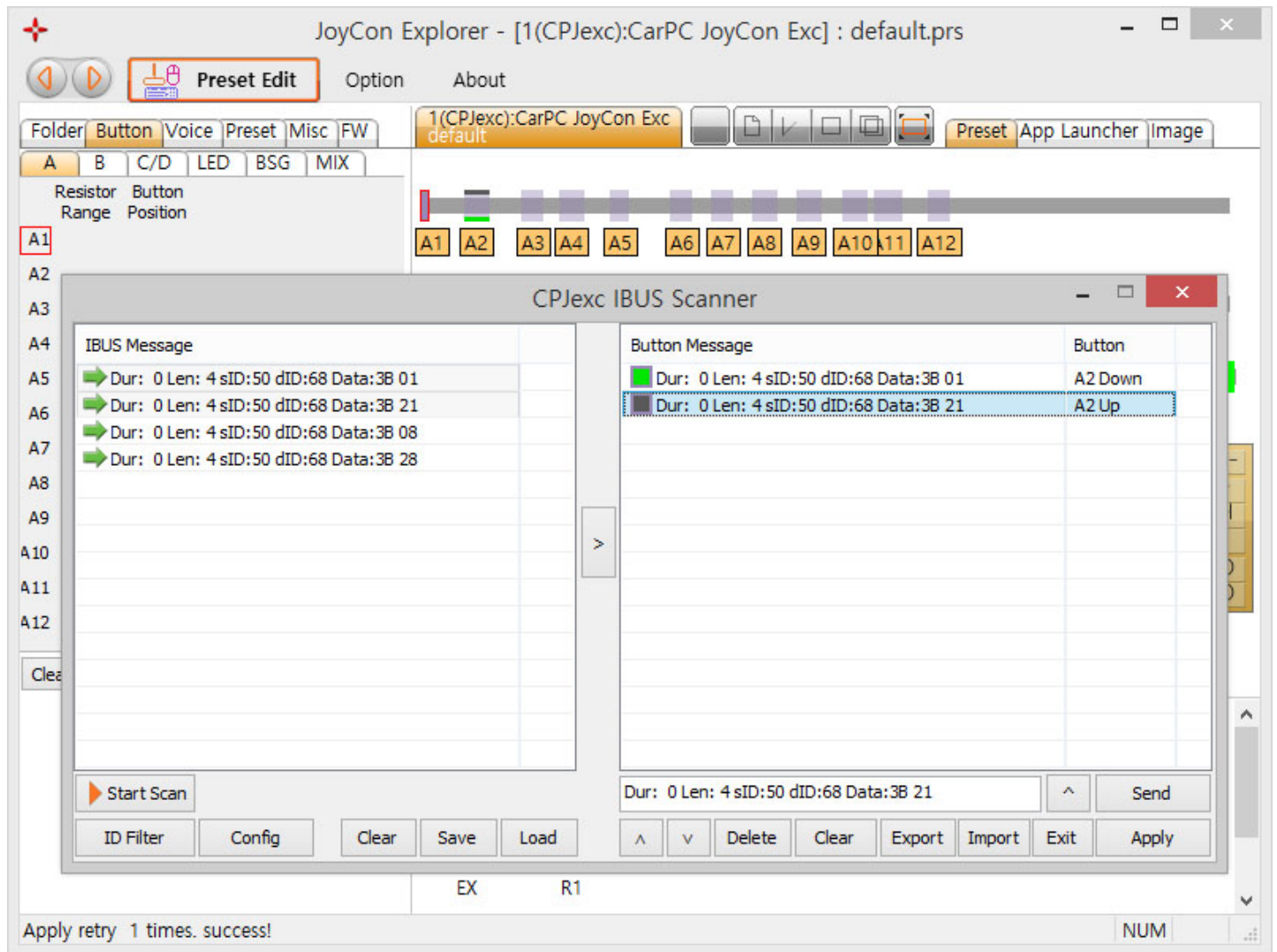
**CPJexc CAN Scanner**

CAN Message		Button Message		Button
→	Dur: 0 Len: 8 ID:0234 Data:01 01 01 01   01 01 01 0E	■	Dur: 0 Len: 8 ID:0234 Data:01 01 01 01   01 01 01 0E	A1 Down
→	Dur: 0 Len: 8 ID:0234 Data:01 00 01 01   01 01 01 0E	■	Dur: 0 Len: 8 ID:0234 Data:01 00 01 01   01 01 01 0E	A1 Up
→	Dur: 0 Len: 8 ID:03CD Data:02 01 02 02   02 02 02 0E			
→	Dur: 0 Len: 8 ID:03CD Data:02 00 02 02   02 02 02 0E			

Start Scan ID Filter Config Clear Save Load Dur: 0 Len: 8 ID:0234 Data:01 00 01 01 | 01 01 01 0E Send ^ v Delete Clear Export Import Exit Apply

EX R1 NUM

You can SCAN all the IBUS message transaction at the radio connector to use it as buttons.



CarPC JoyCon Exc includes all the function of Exr

### JoyCon Explorer feature(for Windows PC)

- Preset switching by buttons.
- Application Launcher(application launches and pops up with preset switching).
- Voice and OSD by button and preset switching.
- User definable button voice and OSD.
- Rearview by reversing light
- Online firmware update.
- No external power or driver installation needs. (External power is optional.)
- Available OS : Windows 8, Windows 7, Vista, XP, 2003

JoyCon Explorer supports Windows XP and the later version.

JoyCon Explorer does not support Linux, Mac. But CarPC JoyCon Exd works on Linux and Mac after it is configured at Windows.

JoyCon Explorer does not support Android devices. But CarPC JoyCon Exd works on Android devices (from Android version 3.1) after it is configured at Windows.

### Supported cars(reported so far):

CAN steering wheel controls

AUDI

VW(Volkswagen)

CAN or IBUS steering wheel controls

BMW all model

Digital steering wheel controls

BMW IBUS(eg. E39 E46 E45 E38 E36 E37 E38(Z3) E53 E83, X3, X5)

AUDI '99-'04 (LIN)

VW '99-'04 (LIN)

Renault Clio  
Peugeot 206 307 406  
Peugeot 306  
Ford Mondeo MK2 '96-'00  
Hyundai(digital, Sonata2/3, Marcia,Santamo),  
Renault SM (digital)  
Volvo XC70 '03

Resistive steering wheel controls

Alfa Romeo 156 2.0 JTS  
Chevrolet Captiva  
Chevrolet Cavalier  
Citroen Xantia  
Citroen XSARA 1997-2000  
Dodge Durango  
Fiat GrandePunto  
Ford Fiesta  
Ford Focus  
Ford Fusion 2010  
Ford Mondeo  
Ford Mondeo MK2 1996-2000(Resistive PCB is required)  
Ford Ranger(Cruise control only)  
GM Cadillac Escalade 2002  
GM Daewoo all model  
Honda Civic 2007 Type R (Euro version)  
Honda CRZ  
Honda Ridgeline  
Hyundai all model(except Sonata2/3, Marcia, Santamo)  
KIA all model  
Land Rover Discovery 4  
Mazda3 2004-2009  
Mitsubishi 380GT 2006  
Mitsubishi NATIVA/MONTERO/PAJERO SPORT 2010  
Nissan 350Z  
Nissan Cube  
Nissan Murano  
Nissan Navara 2007  
Peugeot 306(Resistive PCB is required)  
Peugeot 806  
Pontiac Firebird 96  
Renault Samsung SM5/7(Audio controller only)  
Rover  
SAAB 9-3 9-5  
Scion TC 2006  
Subaru Impreza  
Subaru Liberty 2006  
Suzuki Grand vitara 2006-2010  
Suzuki SX4  
Toyota Camry 2005 - 2011  
Toyota Corolla 2004(Cruise control only)  
Toyota Corolla 2009-2010  
Toyota Land Cruiser 2004  
Toyota Landcruiser 200 series (2007 – 2010)  
Toyota Lexus 330  
Toyota supra 1990  
Toyota Yaris  
Vauxhall Astra G 1998-2004  
Vauxhall Vectra 1999-2002  
Vauxhall Vectra B 1996-2002  
Vauxhall Zaffira A 1998-2005

and many other cars with resistive steering wheel controls

Supported remote controller:

Sony RM-X2S

Sony RM-X4S  
Sony RM-X11M

JoyCon Explorer  
[http://www.changjack.com/software/Jex\\_Setup\\_Win7\\_8\\_10\(160620\).zip](http://www.changjack.com/software/Jex_Setup_Win7_8_10(160620).zip)  
[http://www.changjack.com/software/Jex\\_Setup\\_XP\(141013\).zip](http://www.changjack.com/software/Jex_Setup_XP(141013).zip)

User Guide  
[http://www.changjack.com/user\\_guide/cpjexc/CPJexc\\_UserGuide\\_eng.pdf](http://www.changjack.com/user_guide/cpjexc/CPJexc_UserGuide_eng.pdf)